



Historical Happenings

The Newsletter of the Grove City Area Historical Society

www.grovecityhistoricalsociety.org

724-458-1798

gcchs@zoominternet.net

Volume 10, Issue 3

November 2010

Board of Directors

*Skip Sample, President
Member-at-large*

*Frank Hoffman, 1st VP
Member-at-large*

*Linda Beatty, 2nd VP
Liberty Township*

*Georgia McIntire, Sec.
Pine Township*

*Tom Armour, Treas.
Member-at-large*

*Judy Hassler
Springfield Township*

*Marty St. John
Member-at-large*

*Ed Carlson
Member-at-large*

*Anita DeMarco
Grove City Borough*

*Harry Lutton
Member-at-large*

*Gary Forsythe
Grove City Borough*

*Norm Turner
Wolf Creek Township*

*Lillian Reeher
Member-at-large*

*Joseph D. Monteleone
Grove City Borough*

*Debbie St. John
Newsletter Editor*

BORDERS / WALDENS FUND RAISER

Raising funds is an important activity of the society. As I have said many times in other newsletters, our membership contributions cover about half of our expenses each year. The difference must therefore be raised through donations, bequests, or fundraisers. We have had 2 very successful sidewalk sales the last two years. Each sale has raised about \$1600. This has been an effort of many people and it has been fruitful. However, this still is not enough.

This holiday season we are trying something different. **BORDERS/WALDENS** has a fundraiser for non profit organizations that appears to be something we could take advantage of. Enclosed in this newsletter are coupons. These are to be used at the Borders store at the Prime Outlet – space 1245 – near the back of the Outlet Mall – or the Waldens store at the Shenango Valley Mall. These coupons must be used on **November 19th and 20th**. That is the Friday and Saturday BEFORE Thanksgiving. Depending on how much money is spent at the two stores we will receive anywhere from 10% to 25% of the net sales. You must present the coupon at the time of the sale to qualify for the reimbursement.

So, what do you do? You take your coupon to one of the two stores on one of the two days and do some Christmas shopping. There are 3 coupons in your newsletter. Give them to friends, neighbors, family members and ask them to help us. If you need more coupons we will have them at the headquarters, or you can copy them yourself.

Gift certificates do not count for this fundraiser. The merchandise purchases have to be at these two stores. If gift certificates were used, the actual purchase would be at another store.

Let's have this Holiday Season be an educational one and help the society end the year in a positive financial situation.

YEAR END CONTRIBUTIONS

As our year draws to a close many of you will be considering making year end contributions to charities. Please add **THE GROVE CITY AREA HISTORICAL SOCIETY TO YOUR LIST OF ORGANIZATIONS**. We are a 501 (c) 3 tax exempt organization, so any contribution will be considered a tax donation. **All contributions, large or small, are appreciated**

PRESIDENT'S MESSAGE

Keeping track of everything that goes on at the headquarters is almost a full time job. Sometimes I feel my head spinning with all the activity. I feel very strongly that the headquarters is a public place and should be available to groups if they wish to avail themselves of our facility. AND, the more people who come to visit and learn all that we are doing, the more members we will gain.



This year has been exceptionally busy. Work is progressing upstairs on the rooms. Each room is going to be unique. The agriculture room is going to have barn siding on one wall that was donated by Ed Zajac. The sports room has astro turf on the floor. The church room has a stained glass window that was donated by East Main Presbyterian Church. The men's and women's clothing rooms are complete. The typical bedroom from the Traveler's Hotel is complete. The other rooms are works in progress, but progress is being made. Gary Forsythe and Ray Abplanalp have hung storage cabinets in most of the rooms. Mary Ann McClinton, Rose Stote, Linda Beatty and Jane Cleary have been working on moving items that have been stored in several of the rooms and putting them in their correct locations. This is a time consuming project. Once all the items are moved and the moves recorded, Frank Hoffman must make the changes on the data base in the computer. This way when we want to find something we will know where it is in the building.

The veteran's room is having a special display wall built to display military uniforms and memorabilia. Randy Voltz is going to do the work. He is donating his time. We will pay for the material. That is a fine contribution. We still have a tremendous amount of work to do, but we can see progress, and maybe a little light at the end of the tunnel.



We have had several groups visiting the headquarters. Of course the eighth grade classes from the middle school came. There were about 180 young people listening to the history of the society and, of course, the ghost stories. Over the summer there were 2 class reunion groups visiting. The class of 1960 came for their 50th class reunion. The other class was the class of 1975. The Grove City Rotary Club had lunch at the headquarters on October 21st. The Grove City Ministerial Association will be meeting at the headquarters on November 3rd. All this is in addition to the genealogy seminar that was held in early October and the four seminars that we are having dealing with the history of Liberty, Wolf Creek, Springfield, and Pine Townships. Anne Dayton spoke of the history of Liberty Township and Lillian Reeher told about Wolf Creek Township. We have 2 seminars left. On November 1st, Harold Ifft will discuss the history of Springfield Township, then on November 15th, Ed Carlson will bring special guests Nannie Jean Hay, Frances Steese, and James W. McDowell to tell the history of Pine Township.

So, you can see why I sometimes have to stop and think what is going on and what I must address. It is fun and rewarding to see all the enthusiasm and willingness to help that our many volunteers show. Yes, most of our volunteers have gray hair, or no hair, but that does not dim their interest. We are fortunate that we are such a dynamic and involved organization.

A REQUEST

As I mentioned in the President's Message each of our rooms on the second floor is going to be unique. We are looking for a canoe. We would like to mount it on the wall of the Scouting Area, add shelves and use it for displays. If anyone has a canoe that they no longer use, we would love to have it. Give Ed Carlson a call – 724-748-3428.



FALL GENEALOGY WORKSHOPS



Over thirty participants took part this fall in the genealogy workshops, jointly sponsored by the Grove City Historical Society and the Grove City Community Library. The first presentation was held at the Grove City Library, on Saturday morning, September 25th. Librarian Jessica Hermiller's presentation revealed wonderful resources held by the Library for researchers to use. Some of the titles she discussed included the following: The Troubleshooter's Guide to Do-It-Yourself Genealogy; Mercer County, PA Soldiers: Revolutionary War, War of 1812, and Civil War; Venango County, Pennsylvania: Cemetery Records and Early Church Histories; The Scots-Irish in Pennsylvania and Kentucky; Pennsylvania German Marriages. The Library also has many Grove City directories from past years, passenger and immigration lists,

and an interlibrary loan service to obtain other titles you might wish to borrow. In addition, the Library has free access to the Internet where visitors can explore the many genealogy websites recommended by Ms. Hermiller.

Next on the program, Jane Cleary showed some of the resources accessible at the Grove City Historical Society, such as the electronic index to cemeteries in Mercer County, family histories, the newspaper clippings file, and the Society's database of its holdings. In addition, she demonstrated how to find census data and family trees on Ancestry.com. The Historical Society now has its new visitor workstation available, thanks to the efforts of Tom Armour. The speedy computer and printer in the newly remodeled front room should make researching much easier.

The program continued the following Saturday, when Bob Hinds spoke at the Historical Society. A local specialist in genealogy, Bob discussed and demonstrated many great online sites. In addition, he shared advanced search strategies and methods for formulating questions when using Google online, to improve search results. Bibliographies and handouts were provided by all of the presenters.

In response to one participant's request, we now have large 12-Generation Charts for sale in the Museum Shoppe (\$5.00), to help researchers plot their ancestors. Members may also contact Jane Cleary for assistance in researching family history (cleary2@zoominternet.net).

COMING EVENTS

- **NOVEMBER 19TH AND 20TH BOARDERS/ WALDENS FUNDRAISER**
- **DECEMBER 4TH 3:00 – 5:00 p.m. MEMBER WINE AND CHEESE – CONTRIBUTION FOR FOOD PANTRY NECESSARY TO ENTER EVENT**
- **SOCIETY CLOSING FOR WINTER – DECEMBER 18TH – 3:00 p.m.**
- **SOCIETY OPENING FOR 2011 SEASON – APRIL 13TH 12:00 p.m.**
- **ANNUAL BANQUET – APRIL 16TH - EAST MAIN PRESBYTERIAN CHURCH**

SPEAKER – SKIP SAMPLE

“WALK DOWN GROVE CITY'S MEMORY LANE”

AND ANOTHER REQUEST

Each year the historical society gives out little treat bags during the Christmas Open House. They usually have salty snacks, small candy bars, wrapped candy etc. in them. If you could donate a bag of “something” it would be appreciated.

CHRISTMAS OPEN HOUSE

Each year we participate in the Grove City Downtown Christmas event by having a wine and cheese open house for our members. **This year it will be on December 4th from 3:00 – 5:00 p.m.** As usual it will be catered by Cameron Catering.

This year, however, it is going to be a little different. It is not going to be a free event. In order to get into the Wine and Cheese you must bring a non perishable food item for the **Food Pantry**. We are going to decorate our window with Christmas Trees and we will be putting the food under the trees. Our window is big, so it can accommodate a lot of food. If you do not plan to come to the Wine and Cheese you can bring your food anytime and it will be added to the window.

The Christmas Open House is a very nice event. It is an opportunity for members to meet and greet each other, see the lovely displays we have and enjoy delicious food. Plan to attend this gala event and help our less fortunate neighbors by bringing some food.

LOCAL ARTISTS

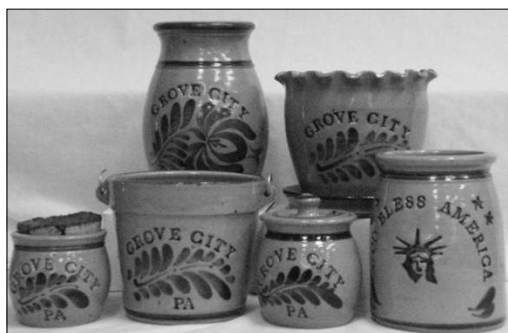
MAUDE WINDER AND MARGARET WILLIAMS



Recently the historical society received 3 paintings by these two local artists. One painting by Margaret William is delightful. It is a painting of a young girl named, Mary Ellen Lamb. The portrait was painted when Mary Ellen was in first grade at Washington School. Mary Ellen lived next door to “Miss Margaret” on Pine Street and visited with her often. Mary Ellen’s brother Bill visited the headquarters this summer when he was in town for his 50th high school class reunion. When he saw all the Margaret Williams paintings that we have he asked if we would be interested in the portrait of his sister. As you might guess, the answer was a definite “Yes!” It is a nice addition to our art gallery.

The other two paintings are by Maude Winder. They were found in an antique shop north of Grove City. One is a beautiful painting of Harbison Chapel. The other is a series of matted and framed ink sketches also of Grove City College. Again, they are a nice addition to our collection.

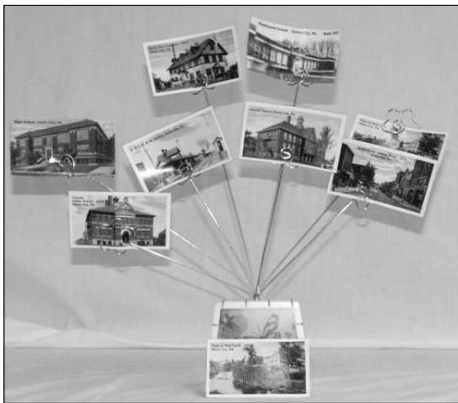
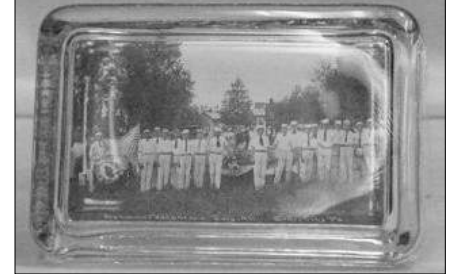
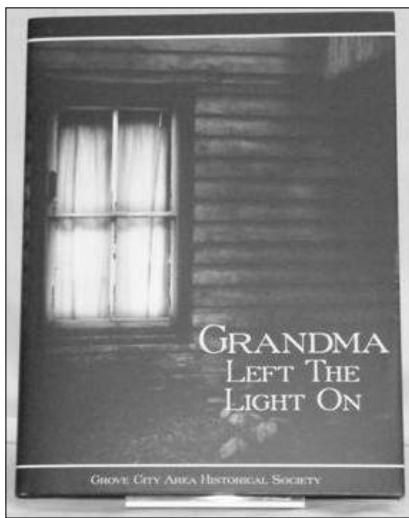
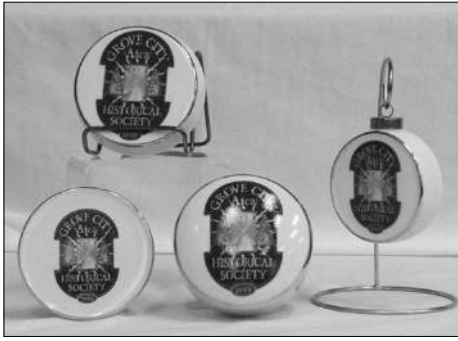
CHRISTMAS SHOPPING AT THE MUSEUM SHOPPE



It's that time of year again! Christmas shopping is just around the corner. Have you seen the selection of merchandise, including new items, available at the Historical Society's Museum Shoppe?

Included in this newsletter is a sales sheet listing everything available. New items include our most recent publication, *Grandma Left the Light On* and with the recent Cooper Bessemer reunion, we offer the history of Cooper Bessemer, along with many other books.

There is the Grove City Crockery as well as t-shirts, sweatshirts, coasters, magnets and paper weights. Our newest items are note cards and postcards of local interest.



These items and more are waiting for you in the Museum Shoppe!

Grove City Area Historical Society

111 College Avenue
P.O. Box 764
Grove City, PA 16127
724-458-1798

NON-PROFIT
U. S. POSTAGE
PAID
GROVE CITY, PA.
PERMIT NO. 764



Museum and Gift Shoppe Hours
Tuesday-Saturday 12:00PM - 3:00PM

Website:
www.grovecityhistoricalsociety.org
Email: gcahs@zoominternet.net

To join or renew your membership, please send your payment along with your name, address, phone number and email address to the Grove City Area Historical Society.
Make Checks Payable To: Grove City Area Historical Society
Founding and Life Memberships are payable over 3 years.

MEMBERSHIP CATEGORIES:		DONATIONS:
Founding	\$1,000.00	\$
Life	\$500.00	
Corporate	\$50.00	
Family	\$40.00	
Individual	\$20.00	
Student / Senior	\$10.00	

GCAHS is a tax exempt charitable 501c3 organization. All membership contributions are tax deductible to the extent of the law. **THANK YOU FOR YOUR SUPPORT!**

NAME _____

ADDRESS _____

CITY, STATE, ZIP _____

TELEPHONE _____

EMAIL _____

PLEASE CIRCLE: new member renewal change of address

YOUR MEMBERSHIP ENSURES OUR SUCCESS