



# The Grove City Area Historical Society Newsletter

www.grovecityhistoricalsociety.org

724-458-1798

gcchs@zoominternet.net

Volume 9, Issue 1

March 2009

## Board of Directors

*Skip Sample, President  
Member-at-large*

*Frank Hoffman, 1st VP  
Member-at-large*

*Marty St. John, 2nd VP  
Member-at-large*

*Georgia McIntire, Sec.  
Pine Township*

*Tom Armour, Treas.  
Member-at-large*

*Anita DeMarco  
Grove City Borough*

*Judy Hassler  
Springfield Township*

*Richard Snyder  
Member-at-large*

*Dean Kildoo  
Liberty Township*

*Paula Louise  
Grove City Borough*

*Harry Lutton  
Member-at-large*

*Gary Forsyth  
Grove City Borough*

*Norman Turner  
Wolf Creek Township*

*Lillian Reeher  
Member-at-large*

*Judi Craig-Redmond  
Member-at-large*

*Joseph D. Monteleone  
Grove City Borough*

*Ed Carlson  
Member-at-large*

*Debbie St. John  
Newsletter Editor*

## INCOME VS. EXPENSES

The Grove City Area Historical Society has a problem – a very big problem! Our main source of revenue is from memberships – new and renewal. This generates an income of about \$5,000 a year. Unfortunately the cost to run the society and the building is about \$10,000. Hence, the problem! This is a major shortfall and one that cannot be covered by a government bailout plan. Last year we had a significant end of year donation from a member, we had income from antique seminars that were held, plus we had a large security deposit refund from the gas company. This allowed us to meet our expenses. However, deficit spending like this cannot continue. We must consider doing several things: 1. Increase the number of members each year; 2. Encourage people to make charitable contributions to our organization; 3. Have fundraisers to raise money; 4. Try to get some people to become Founding or Life Members (a Founding Membership is \$1,000 and a Life Membership is \$500.) A couple such memberships each year would help. If you would consider becoming a Founding or Life Member, this contribution could be spread over 3 years rather than being paid in one lump sum. Finally, we encourage people to remember the Historical Society in their wills.

We need your ideas for fund raisers or your suggestions to deal with this financial crises. If you have an idea for a fundraiser, we will need you to be in charge or help with the implementation of the idea. Your thoughts on this matter are important, so please speak to me or to one of the board members. This is a serious problem that must be addressed.

## DONATIONS NEEDED

As we prepare to open the museum for another year, there is a need for many items. If you would like to donate cleaning supplies, toilet paper, paper towels, and napkins it would save the cost of these items being taken out of our operating expenses. Also, we use a tremendous amount of paper and stamps, so a roll of stamps or a box of typing/computer paper would be very useful. We will be doing a tremendous amount of painting, sanding, and varnishing on the second floor, so monetary donations would be appreciated to cover some of these costs. You have read elsewhere in this newsletter that we have received a grant to cover the cost of remodeling the second floor, so you probably are wondering why we are asking for donations to purchase paint. The minimum cost to do a room is about \$1200 without paint and painting. We are hoping members of the society will be doing the painting. We will go through the \$25,000 very quickly when we begin to purchase storage units and display cabinets. Therefore, donations and contributions are a continual need as well as the donation of your time. Remember, the Historical Society belongs to everyone, not just a few.

## PRESIDENT'S CORNER

December 16, 2008 passed very quietly at the Grove City Area Historical Society. What was so special about December 16, 2008? It was the 10<sup>th</sup> anniversary of the incorporation of the Society. It is hard to believe that 10 years have passed. A lot has been accomplished in that time. We have a headquarters, thanks to the generosity of Grove City Borough. We have a museum, thanks to the hard work of many people. And, we are remodeling our facility thanks to grants from Alcoa, State Representative Dick Stevenson, and State Senator Bob Robbins. Without these donations and grants we would not be able to remodel and update our building.



Two of the upstairs rooms that will be included in the renovations.

We are starting to remodel the second floor. We have installed a new furnace and central air conditioning upstairs. Now we are beginning to re-plaster and paint each room. Five rooms are usable as they are. Those rooms are already being used for storing items. Three rooms are currently "under construction" using existing funds. We are awaiting a \$25,000 grant from Bob Robbins which will be used to finish the other rooms, purchase paint and storage/display cabinets.

There is a lot of painting that will need to be done. If anyone is interested in helping with the painting, let me or one of the board members know. There are a lot of rooms that will need to be primed and painted.

We are planning to open on **April 14<sup>th</sup>**. Our hours will remain as they have in the past – **12 PM to 3 PM, Tuesday through Saturday**. Due to the remodeling on the second floor the museum will not be in its usual pristine condition. Like Penn Dot, "we apologize for the temporary inconvenience," but look forward to the permanent improvement.



The current condition of the museum

Skip Sample

## REPORT FROM THE ACCESSIONS COMMITTEE



We acquired 141 accessions (many with multiple items) last year. Many of these items are displayed in our 1930's kitchen. Some of the items of major interest include a refrigerator, a wringer washing machine, a gas stove, and a cream separator. Of course, we continue to receive Grove City College and Grove City High School yearbooks, Cooper Bessemer items as well as items from other local businesses, current and past. The recently remodeled kitchen has also provided a "hiding place" for accessions until they are processed.

We continue to receive hammered aluminum items from our area. The pictured Christmas tree is decorated with virtually all of the Wendell August Forge Christmas ornaments. This tree is our latest gift. On the wall behind, you can see the Wendell August Christmas plates in aluminum and pewter. We also are seeing a trickle of plates "By Natale." Our aluminum collection grows only by donation. We are always happy to see hammered aluminum items from the past come our way.

## Grove City Area Historical Society

## Actual vs. Budget

Jan 20th, 2009

		2008			2009
		Budget	Actual YTD	Diff	Budget
<b>Revenue</b>					
	Donations	10000	4070	-5930	6000
	Donations - Government	2500	2400	-100	3500
	Grants - Alcoa Fdn	30000	24500	-5500	45000
	Memorials	400	300	-100	400
	Memberships	5000	3770	-1230	5000
	Interest income	100	38	-62	40
	Misc	1000	800	-200	300
	Dinners	2000	2215	215	2200
	Arthur Armour Project	300	100	-200	100
	"The Way We Were"	1500	2000	500	1200
	"Grandma Left the Light On"	4000	0	-4000	8000
	Book Patrons	10000	0	-10000	12000
	Pa Sales tax	200	121	-79	700
	Antiq & Genealogy Classes		3000	3000	0
	<b>Totals</b>	<b>67000</b>	<b>43314</b>	<b>-23686</b>	<b>84440</b>
<b>Expenses</b>					
	Bldg, Cap Ex and Maint.	30000	27101	-2899	51000
	Repairs and Maintenance	1500	454	-1046	400
	Utilities	4000	3305	-695	6000
	Insurance	1800	1614	-186	1700
	Equipment	500	500	0	500
	Office Supplies	950	500	-450	500
	Postage	900	763	-137	800
	Computer Supplies	2000	700	-1300	300
	Website	500	258	-242	400
	Accessions supplies	1000	500	-500	500
	Arthur Armour Project	100	100	0	100
	Janitorial Supplies		0	0	50
	Genealogy Supplies	500	628	128	500
	Museum Supplies	500	300	-200	300
	Misc Supplies	0	223	223	100
	Dinners' Expense	2000	1745	-255	2000
	Publications Fund	15000	300	-14700	15000
	Education & Training	1000	300	-700	300
	Misc exp	225	1500	1275	200
	Pa Sales Tax Payable	200	121	-79	700
	Endowment & Savings	1000	1240	240	1250
	Executive Director	1200	1200	0	1200
	Legal, Acctg, Prof.	125	125	0	125
	<b>Totals</b>	<b>65000</b>	<b>43477</b>	<b>-21523</b>	<b>83925</b>
<b>Cash</b>					
	Beginning cash		17630	CK BK	
	Misc - transfers/interest				
	Receipts		43314		
	Disbursements		-43477		
	Ending Cash		17467	(CK 11067+2nd FI 6400)	
<b>Reserve Funds</b>					
	Cash - Executive Director Fund		1605		
	Cash - Arthur Armour		1105		
	Cash - Alcoa Grant		0		
	Cash - CD Executive Director Fund		5346		
	Cash - CD Endowment Fund		9646		
	Cash - CD Publication Fund		4789		
	<b>Total Reserve</b>		<b>22491</b>		

**“ATTENTION GROVE CITY AREA ARTISTS!”  
SUMMER ART CONTEST**

The Grove City Area Historical Society, in connection with our 10<sup>th</sup> Anniversary, wishes to strengthen our Historical Museum’s collection of art work done by local artists. We are fortunate to already house paintings by Maude Winder, Margaret Williams, Charles Elliott, Lois Hamilton and Reverend William Bovard. We would love to add some new contemporary artists’ work to our collection. To do this we are sponsoring a summer art contest.

We will offer token contest awards (ribbons to the first three places in each category) and a monetary award to the first three places for overall “Best of Show” winners (\$50, \$25 and \$10).

We hope that your entry will become the property of the Grove City Area Historical Society to be displayed in our Museum and/or to be digitally copied on: placemats, T shirts, note cards, publicity, etc. to benefit the Society. The artist’s name will be included in each usage. Our accession sheets will give you the opportunity to give us your desire: to lend us the picture(s) for 1 year, display only, or on permanent loan, and how you permit your picture(s) to be used by the GCAHS.

Our theme is “Green Grove City.” Our community is noted for its scenic landscape, both natural and man made. Artists might consider basing their work on scenic spots found in: Grove City Memorial Park, Hunter Farm, Wolf Creek, home or municipal building landscapes, streetscapes, playgrounds, or athletic fields. Art work may include people or animals making use of our green areas. All works must have been done in the last 12 months.

We will have 7 categories plus an additional special category sponsored by Olde Town Grove City. This category must emphasize the Broad Street Area. It may picture people or groups enjoying and making use of the renovation work completed thus far. The same rules apply to ownership and use of entries in section 8. The art work becomes the property and use of the Olde Town Group. The section 8 group will be awarded special prizes by Olde Town Grove City.

We will divide the art work into 7 categories: 1. Oil, 2. Water Color, 3. Pen and Ink or Pencil, 4. Photography, 5. Acrylic, 6. Clay, and 7. Mixed Media. All entries will be due by August 4<sup>th</sup> at the Grove City Area Historical Society the day before The Olde Town American Festival (the former Grove City Street Fair) August 5 - 8. They will be displayed in the Museum and judged by a panel of artists.

\*\*\*\*\*We reserve the right to reject any or all works of art\*\*\*\*\*

### LOCAL ARTISTS

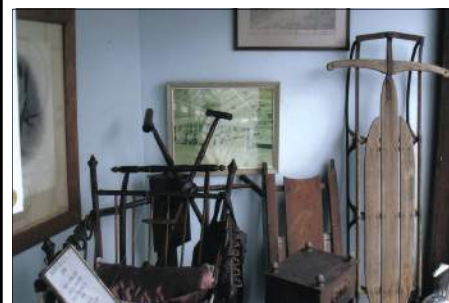
In recent years, the Historical Society has received several paintings done by local artists. These paintings are either outright donations or they are on loan. We would like to acquire as many paintings as possible by these local artists: Maude Winder, Margaret Williams, Rev. William Bovard, Lois Hamilton, Tom Schubert, Charles Elliott, Walter McDowell, and others. If you have a painting by a local artist, please consider donating it to our society so that it can be displayed and enjoyed by others. Also, floating around the town are many pictures of houses done by Maude Winder. The Historical Society, in fact, has her records listing those houses that she painted. She produced hundreds of house pictures during her lifetime. Wouldn’t it be wonderful to have a sample or small collection of these pictures? If you still want to keep the original picture, we could have the original painting copied and the copy given to the society while you retain the original. We have many empty walls that we would like to use to display our local talent.



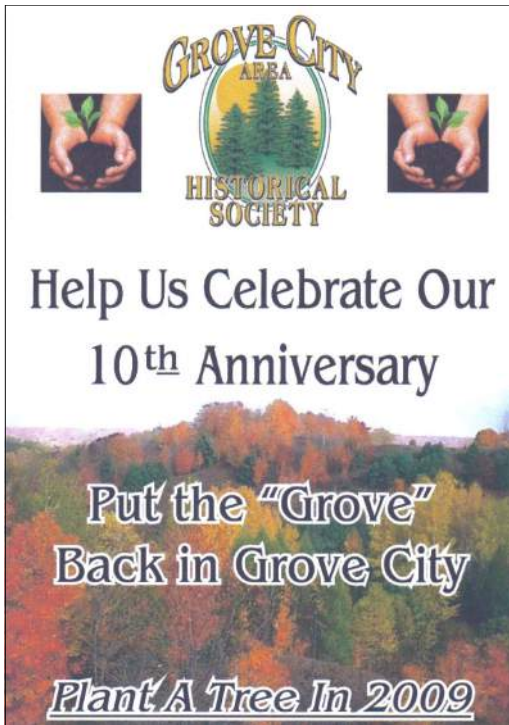
The current window display at the Society is themed “The Way We Were.” Even though the Society and Museum Shoppe aren’t open yet, window displays can be seen year round. Take a stroll by our window to see what wonderful treasures from the past might be there for you to discover.

You won’t be disappointed!

We are always looking for new ideas and items to put on display. Contact the society if you can help.



## PLANT A TREE



The year of 2009 marks the 10<sup>th</sup> Anniversary of the GCAHS's incorporation. This year, as a part of our celebration, we have adopted the slogan "Help us put the Grove back into Grove City." As many of our older residents know, our community was carved out of a grove of Pine, Hemlock and Oak trees. Today, the remains of this great forest still exist throughout the area.

Several years ago, our first year and now, again, our 10<sup>th</sup> year president formulated and carried on a similar campaign to increase the greenery in our home town. In 1971, with a desire to replace the 13 dead Dutch Elm trees on her family's corner lot, she championed an amendment to change the 1951 ordinance forbidding the planting of trees or shrubs within the street line (the devil strip). The Borough Council passed Ordinance #628 thus "permitting the planting of trees or shrubs within the street line in the Borough of Grove City with written approval of the Borough Manager and in accordance with an approved Borough Tree Planting Plan".

With a written permission in hand, Mary "Skip" Sample began her efforts to restore the tree lined streets of Grove City. This effort is still in effect today. Her efforts from time to time have been aided by various social groups. The effort and vigor she has shown in this project has caused her to earn the nickname - "Grove City's Tree Lady".

In honor of Skip's community service to help keep Grove City a Green Community and help to preserve our heritage, through the GCAHS, we have elected to have the citizens of the Borough plant 500 White Spruce seedlings throughout the area during the Spring. They will keep our community a lot greener and serve as habitat for our birds and small wild creatures.

The PA Game Commission will aid us by donating 500 seedlings for us to dispense to our community's citizens. They should arrive at the Society mid April to mid May. By way of the local newspapers, we will notify the community of their availability. The trees are free for the planting and can be picked up at the Society's Museum on College Avenue. Those not picked up will be available during Strawberry Days.

Let's celebrate our 10<sup>th</sup> Anniversary by making Grove City a little greener. Help us by planting a White Spruce seedling in your yard.

**There is a saying for those who volunteer:** If you don't have a "hands on" commitment to the services you provide, this organization cannot succeed.

Our volunteers serve special needs: maintaining the opening and closing of the Historical Society, offering unique gift items of memorable interest, accepting donations, offering genealogy services, maintaining the Library with notable readings of our past and present, organizing window displays, abstracting and filing news releases of important events such as marriages, engagements, obituaries, sports, etc., maintaining a Historical Memory album of deceased residents, providing speakers to local organizations, refurbishing our historical museum and providing displays of interest. Our non-profit organization needs all "hands on" deck.

If you, a citizen of Grove City or the surrounding area, and have not made the commitment to become a volunteer, do so now. We need you and the unique services you can provide. Contact Anita DeMarco at (724) 458-9499 or email at [ajdemarco@zoominternet.net](mailto:ajdemarco@zoominternet.net).

Remember, it is you, as you extend a helping hand, that makes the GCAHS a program to enrich past and present memories of our area. Let your hands be guiding hands of helpfulness and giving in the coming year.

Thanks for being on our team.

## VOLUNTEER ORIENTATION LUNCHEON

April 11, 2009

11:00 AM to 1:00 PM

All members are invited to attend the orientation luncheon at the Society.

Come and learn how to volunteer your services.

**Grove City Area Historical Society**

111 College Avenue  
 P.O. Box 764  
 Grove City, PA 16127  
 724-458-1798

**NON-PROFIT**  
**U. S. POSTAGE**  
**PAID**  
**GROVE CITY, PA.**  
**PERMIT NO. 764**



Museum and Gift Shoppe Hours  
 Tuesday-Saturday 12:00PM - 3:00PM

Website:  
[www.grovecityhistoricalsociety.org](http://www.grovecityhistoricalsociety.org)  
 Email: [gcahs@zoominternet.net](mailto:gcahs@zoominternet.net)

To join or renew your membership, please send your payment along with your name, address, phone number and email address to the Grove City Area Historical Society.  
 Make Checks Payable To: Grove City Area Historical Society  
 Founding and Life Memberships are payable over 3 years.

<b>MEMBERSHIP CATEGORIES:</b>		<b>DONATIONS:</b>
Founding	\$1,000.00	\$
Life	\$500.00	
Corporate	\$50.00	
Family	\$40.00	
Individual	\$20.00	
Student / Senior	\$10.00	

GCAHS is a tax exempt charitable 501c3 organization. All membership contributions are tax deductible to the extent of the law. **THANK YOU FOR YOUR SUPPORT!**

**PLEASE CIRCLE:** new member    renewal    change of address

NAME \_\_\_\_\_

ADDRESS \_\_\_\_\_

CITY, STATE, ZIP \_\_\_\_\_

TELEPHONE \_\_\_\_\_

EMAIL \_\_\_\_\_

**YOUR MEMBERSHIP ENSURES OUR SUCCESS**