



The Grove City Area Historical Society Newsletter

www.grovecityhistoricalsociety.org

724-458-1798

gcchs@zoominternet.net

Volume 8, Issue I

February 2008

Board of Directors

Ed Carlson, President

Member-at-large

Marty St. John, 1st VP

Member-at-large

Dara Shirey, 2nd VP

Member-at-large

Georgia McIntire, Sec.

Pine Township

Richard Snyder, Treas.

Member-at-large

Judy Hassler

Springfield Township

Frank Hoffman

Member-at-large

Dean Kildoo

Liberty Township

Paula Louise

Grove City Borough

Harry Lutton

Member-at-large

Becky May

Grove City Borough

Jane Neyman

Wolf Creek Township

Lillian Reeher

Member-at-large

Linda Beatty

Member-at-large

Joseph D. Monteleone

Grove City Borough

Debbie St. John

Newsletter Editor

THE YEAR THAT WAS --- 2007

The seventh year of our existence was so productive that it is difficult to accept the fact that it is over and we're already on the move in 2008.

Under the very capable leadership of Dr. Thomas Armour and the enthusiastic and energetic group of officers and volunteers, the Society continues to grow in leaps and bounds. 2007 was a banner year.

The new office was completed and adequately equipped with appropriate computers, phones, excellent lighting and a lot of closed in shelving. It serves dual roles as the Society's business office and accession/computer office.

The net cost of this renovation was \$10,321. A new Publications Room with a work counter and storage cupboards underneath and a working layout table and chairs was completed by the end of summer. It also includes bulletin boards and several shelves and picture wall space. This renovation has a net cost of \$1,000.

The Library and Genealogical Center was completely rearranged, painted and now has a new floor covering and curtains for approximately \$140.41.

It now contains several donated genealogy research books, including seventeen completed local genealogies donated by genealogist Alice McDowell.

Since this job was completed solely by volunteers, the renovation price was minimal.

We just have to thank Dara Shirey, our genealogist, her family and Anita DeMarco for their services to complete this task. This job was completed in the heat of the summer with very long hours of dedicated service. We are now connected to the internet program entitled "ANCESTRY.COM".

It is surprising how many visitors have stopped at the Society to avail themselves of the genealogical services that Dara provides.

At this time it is fitting to mention the enormous amount of "Behind the Scenes" jobs being done by Skip Sample. Every activity of the Society has received her willing help. She particularly shines as one of the groups community liaisons, teaching school age students and speaking to adult groups and organizations. She very actively pursued Alcoa's Grant Community Programs. Under her supervision the upper halls were prepared and initial painting was completed. She was also a driving force behind the removal of excess baggage from the building allowing the group to look forward to the next area of renovation. As Chairwoman of the Long Rang Planning Committee, she has drawn up a workable plan for future development.

(continued on page 2)

The Year That Was (continued from page 1)

Gary Forsythe and Dean Kildoo have volunteered an immense amount of time and talent to keep the building in usable condition, as well as preparing areas that are next in line for renovation. Without going into a lot of detail it is impossible to assess the amount of work they have completed.

Matt Louise and the boys from the George Junior Republic provided the leg and muscle power necessary to move items from floor to floor in order to obtain some organization to the next step in renovation. Two ladies whose services were invaluable over the past year have been our membership chairman, Marty St John, who sends out all our notices and keeps our membership lists updated monthly. With the help of Tom Armour, the membership list is now computerized. The other lady who needs mentioned is Anita DeMarco, Chairman of the Volunteers Committee. Last year every "open Society day" was filled by volunteers thanks to the watchful eye of Anita. Anita also takes care of the Society's Memorial Album and she helped Dara in the rearrangement of the Library.

We almost forgot the magnificent work of keeping the Society's records. Without the work of our excellent secretary Georgia McIntire the Society would be working at slow speed or not at all. She is definitely a driving force at keeping the officers and volunteers informed (When she is not traveling on a bus somewhere).

Back to the improvements and changes: computerized record keeping both with the accessions and photograph department has been a monumental task. Our modernization process has been in the hands of Frank Hoffman and his college student volunteer assistants. The task of registering and placing everything that comes into the building is almost impossible. Frank has not only been able to keep up but is recording some of the memorabilia that came in during the first four years that was not computerized. Tom Armour has been scanning many pictures and documents for the Society along with helping the Society to receive two grants and prepared the forms necessary to send to Senator Robbins. Behind the scenes Tom oversees the overall workings of the Society.

An apology is necessary to all volunteers not mentioned: those who dusted, swept, scrubbed, cut and pasted, filed, sold items from the Museum Shoppe, etc, and of course greeted our visitors with a smile. It has been impossible to mention the work of the Committee to display men and women's clothing, build the displays for the window and the two major display rooms.

You, the Members of the Grove City Area Historical Society, deserve a healthy THANK YOU AND A HEARTY PAT ON THE BACK for all the volunteer work and accomplishments you have made during 2007.

DR ARMOUR, YOU WERE A VERY CAPABLE LEADER and we the Society THANK YOU!!

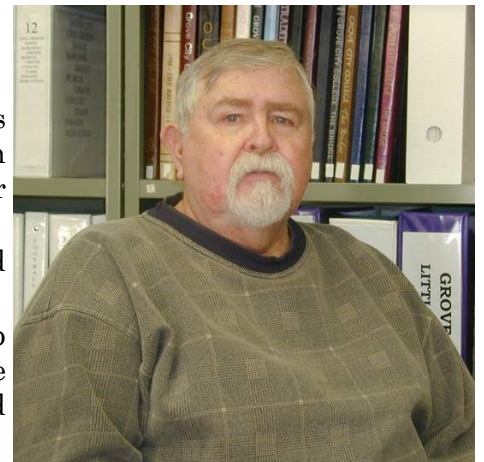
PRESIDENT'S CORNER

Last year as your Vice President, I was able to observe the GCAHS's team of various talented volunteers. On every occasion that I stopped in at the Society a new group of individuals would be there sharing their talents and improving the Society in different ways.

It was also amazing how many members of our community stopped to share their families' stories and memorabilia with the volunteers.

It is my hope that I can adequately fill Dr. Armour's leadership boots during 2008 and have as much willing support as he has had in the past from the volunteers. A good team of workers is very much needed or our programs will screech to a halt.

My personal goals will be to lead the Society with a positive approach that enlarges and increases our ability to preserve our community's history and heritage. Being a retired Grove City educator, my plan is to make the Society's Museum and Library more usable and accessible as tools for study and research. The end result being, hopefully, a yearly paperback publication based on the best papers we receive on local historical people, groups and events. This means placing an additional burden on the shoulders of the Publication Committee. My second goal is to continue the renovation work on the kitchen and its adjoining hall.



President's Corner (continued from page 2)

This will fulfill the late 2nd Vice President Don Beightol's dream of additional first floor display space, a place for meetings and educational classes. The tentative long range plans call for: glass fronted cupboards to properly display glassware, a butcher block counter top on the lower cupboards for craft work and kitchen use, a reconnection of the sink with the addition of a hot water tank, a display of the 1925 gas stove, purchased for the Society by Joe Monteleone, and a "Wall of Educational Photos" to display the importance our community has placed on education. One or more large tables with suitable chairs will occupy the center of the floor making the kitchen also a teaching or lounging room.

The adjoining room will be a receiving room for new accessions until they can be computerized and placed in their appropriately named rooms. It will be separated from the kitchen by some type of moveable folding dividers. Shelves will line the outside walls up to a suitable height in order to display historical pictures or maps above them. Folding tables and folding chairs will make this another teaching or study room. A second proposed thought is to place additional glass display cases there so that more of our accessions can be displayed.

The restroom off the major display room will be redecorated to display earlier features of past closets. Marty St John has willingly volunteered to head that project.

It has been further suggested that we place more display cases in our major display room. This is being given further consideration.

Approximately five digital frames or similar computers are needed to permit the sharing of upstairs displays for the physically handicapped and for the pure enjoyment of visitors and researchers.

The long range plan calls for each of the seventeen rooms on the second floor to house the following displays: ministerial, commercial, Christmas (holiday), Veterans, Founders, men's clothing, women's clothing, accessions, photo storage, agriculture, typical historic boarding house room, community civic clubs, scouting, and sports (indoor/outdoor), also included are storage rooms and toilet/shower facilities.

We hope to develop the upstairs as quickly as finances permit. Chairmen will be appointed to formulate each room's display. The long range plan time frame is based on the amount of cash, grants, pledges and gifts over the course of the year. Senator Bob Robbins is working on a State Grant of \$20,000 which should come to fruition during September 2008.

We definitely have a great start in 2008 but looking at our current estimates to complete the upstairs with heat and air conditioning to make the facility totally usable it will cost the Society approximately an additional \$30,000 plus a great amount of volunteer help. Therefore, during my term we will undergo a very strong push to increase our membership, thus adding more awareness of our goals and adding finances into our treasury.

This membership drive will be short term but intensive (February thru April 19 the night of our annual banquet). The Membership Committee Co-Chairmen - Marty St John and Becky May - will head up this drive.

In the Society's Newsletter we will initiate both the Membership Drive and a soft touch Pledge Program earnestly asking the membership and other community members to make us a monetary pledge to meet the growth goals of our society. The Pledge Program goal will be \$50,000. The Program will be called to a halt October 1st so that we can evaluate how much additional work can be completed between October 1st and December's Annual Christmas Open House. Realistically we hope to complete the upstairs front five rooms: agricultural, ministerial, commercial, Christmas and Veterans.

During April we hope to add additional monies to our Treasury by sponsoring four weekly seminars by Jack Squires on various types of antiques.

In summary, my goals for 2008 weigh heavily upon community pride in our historic background and its energetic approach to our future.

THE COMMUNITY MEANS YOU AND ME AND ALL OF US WORKING TOGETHER!!!

Ed Carlson,
President

SOCIETY PHOTOS 2007



Entryway



Accessions Room



Accessions Room



Churches Wall



Veterans Hall of Honor



Publications Room



Genealogy Library



Genealogy Library



Museum



Museum



Museum



Museum

SOCIETY PHOTOS 2007



Museum Shoppe



Museum



Handicap Restroom



Christmas Window Display

A VERY HEARTFELT THANKS FOR THE FINANCIAL GIFTS PRESENTED TO THE GROVE CITY AREA HISTORICAL SOCIETY IN 2007 BY ALCOA, REPRESENTATIVE STEVENSON, WOLF CREEK TOWNSHIP, UNITED STATES INVESTIGATIVE SERVICES, KUS KUSKA CHAPTER DAUGHTERS OF AMERICAN COLONISTS.

VOLUNTEER OF THE MONTH - DECEMBER



Virginia Taylor - A special Project Volunteer

(as appeared in the Allied News)

"I know of no way of judging the future but by the past". These sapient words of Patrick Henry helped inspire Virginia Taylor, a long-time volunteer of the GCAHS, decide to take on the monumental task of logging almost 600 obituary articles. These abstracted articles were given to the Historical Society by Alice McDowell. Mrs. McDowell had abstracted and preserved these obituary articles, some dating as early as 1900! Virginia volunteered to undertake the expense (purchasing file folders, file cards, paper, and glue) and preparation of preserving these articles for insertion in our computer history and our library files. Volunteering is an integral part of our organization and Virginia Taylor has risen beyond the call of duty.

The Grove City Area Historical Society has taken major steps to accommodate the public's need to preserve the history of the Grove City Area. We encourage residents to share in local memorabilia through "Deeds of Gifts" one of the keystones of our development. Residents who have artifacts, records, and past memorabilia are invited to donate them to the Historical Society. We further encourage you to preserve the memories of your deceased loved ones in our Historical Memory Album.

You, the general public, are encouraged to visit and participate in all of our services. Stop in and meet our volunteers, use our many services and assist us in the historical preservation of the local area. The Historical Society will be closed from December 15, 2007 until the spring of 2008. At that time the Museum Shoppe will be open from Tuesday through Saturday from 12:00 a.m. until 3:00 p.m. Join this friendly group and share in the warmth and hospitality that exists here.

PRIORITY FOR KITCHEN

GOAL: REFURBISH KITCHEN \ REPLACE CEILING, IMPROVE LIGHTING - MAKE ROOM USEABLE.

MOST IMPORTANT WORK

1. Remove bulkhead and upper cabinets - drywall as needed
2. Wire ceiling for:
 - a. spot lights every 3 feet around edge
 - b. 2 ceiling fans
 - c. several light switches so all lights are not on at once
3. Replace ceiling
4. Finish window trim

SECOND TIER OF WORK

1. Remove wall paper and prepare to paint
2. Sand floor
3. Repair sink drain
4. Replace counter top using existing sink



THE SOCIETY WISH LIST

- A CREAM SEPARATER
- VARIOUS SIZES OF MILK CANS
- METAL MILK STOOLS
- WOODEN CHURN
- GLASS CHURN
- DISPLAY CASES
- TOILET PAPER, PAPER TOWELS, GARBAGE BAGS
- CLEANING SUPPLIES, ETC.
- VARIOUS COUNTY HISTORY BOOKS
- YOUR FAMILY GENEALOGY TO BE ADDED TO OUR LIBRARY

OUR BUILDING IS SECURE FROM THE ELEMENTS

- We now have new windows throughout the building.
- We have a new heating/cooling system throughout the first floor.
- We have the appropriate number of fire extinguishers.
- We have a new landing at our front door.
- We have a promise from the Grove City Borough to replace our front sidewalk (at no cost to the Society).
- We also have their promise to run a new water barrier between the alley and the building.

With all these jobs completed -- What else is there to do? Read the President's Corner and find out how he suggests we face the tasks of 2008.

Deed's Travelers Hotel

| Date | Transfer | Cost |
|------------|--|-----------|
| 10/18/1892 | From J.E. & Amanda Black To Harriet F. Hughes | 300.00 |
| | NE 11D-30M-60-Ft. SE 78D- 31M-45 Ft. SW-11D-30M-51 Ft. NW-8D-30M-51 Ft. | |
| 6/7/1899 | From M.O. & Harriet Hughes To Olie L. Gilmore | 1300.00 |
| | NE-11D-30M-60Ft. SE-78D-30M-45 Ft. SW 11D-30M-84.5 Ft. NW8D-30M-51 Ft. | |
| 9/2/1902 | From Olie L. & Elsa L. Gilmore To J.N. White | 1800.00 |
| | NE HD-30M-60-Ft SE 78D-30M-45 Ft. SW 11D-30M-84.5 Ft. NW 8D-30M-51 Ft. | |
| 9/23/1908 | From A. S. White For Mary S. White, A. W. Bliss, C. B. Bliss, S. A. White To W. A. Redmond & H. A. Rhodes | 3,000.00 |
| | NE 11D-30M-57 Ft. SE 78D-31M-45 Ft. SW 11D-30M-81.5 Ft, By Land's Of Redmond &Caldwell NW 48D-30M-51 Ft. | |
| 4/27/1911 | From H. A. & Nellie J. Rhodes To W. A. Redmond | 3,000.00 |
| | NE 11D-30M-57 Ft, SE 78D-31M 45 Ft, SW 1 1D-30M-58Ft.3 In NW 48D-39M-48 Ft. | |
| 10/16/1942 | From W.A. & Chrissie Redmond To Florence Redmond Slater | 10.00 |
| | NE 1 1D-30M-57Ft. SE 78D-31M 45 Ft, SW 11D-30M 81.4 Ft, NW 48D-31M 51 Ft. | |
| 12/17/1948 | From F.R Slater To F.R. Slater & Thomas E. Slater | 1.00 |
| 5.23.1957 | From F. R. Slater & T. E. Slater To Joseph P. Trepaso & Betty Trepaso | 12,000.00 |
| | NE 11D-30M-57 Ft. SE 78D-31M-48 Ft. SW11D-30M-55.6 Ft, NW 48D-30M-48 Ft. Brick Wall North Side, Use Of Steps N,W.Corner,3 Ft. Easement East Side | |
| 8/17/62 | From Charles L. Sloan & Gaye Sloan To Betty Trepaso & Joseph P. Trepaso | 1.00 |
| | NE9D-56Ft. 81D-12M-44.9 Ft, SW-8D-44.9 Ft. SE-1.10 Ft. SW 13D-36M-55.76 Ft. NW 51D-30M-47.9Ft. | |

4/15/1963 From John P. Trepaso not married and Betty Trepaso 15,500.00

To John A. Trepaso & Consetta DeAngio

NE 9D-OOM-56 Ft, SE 81D-12M-44.9 Ft. SE 8D-24M-24.4 Ft Se 89D-53M-1.10Ft. SW 13D-36M-55.76 Ft. NW 51D-36M-47.9Ft.

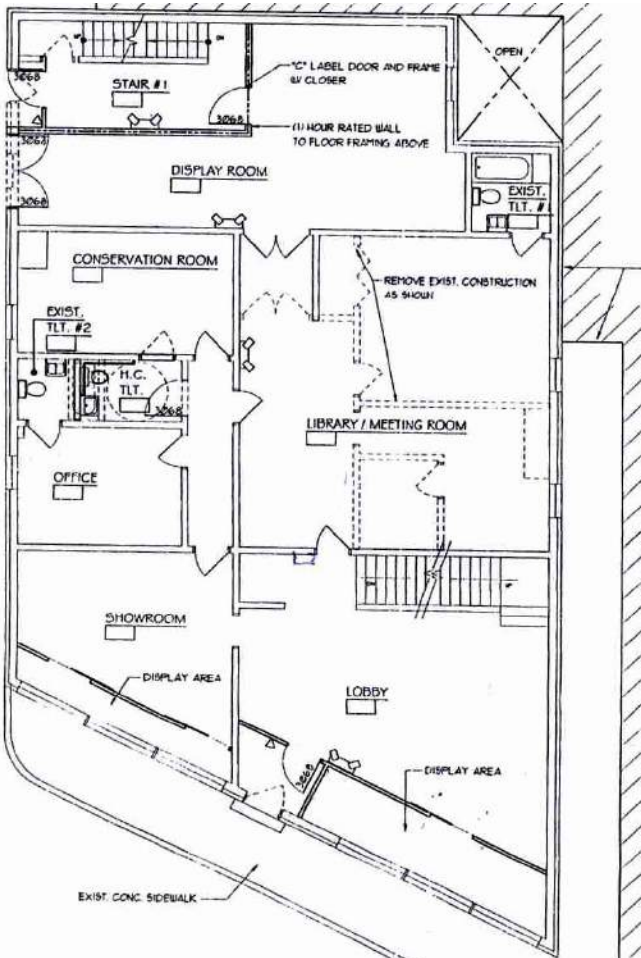
1/5/2000 From Consetta Helen Trepaso 65,000.00

To G. C. Area Historical Society

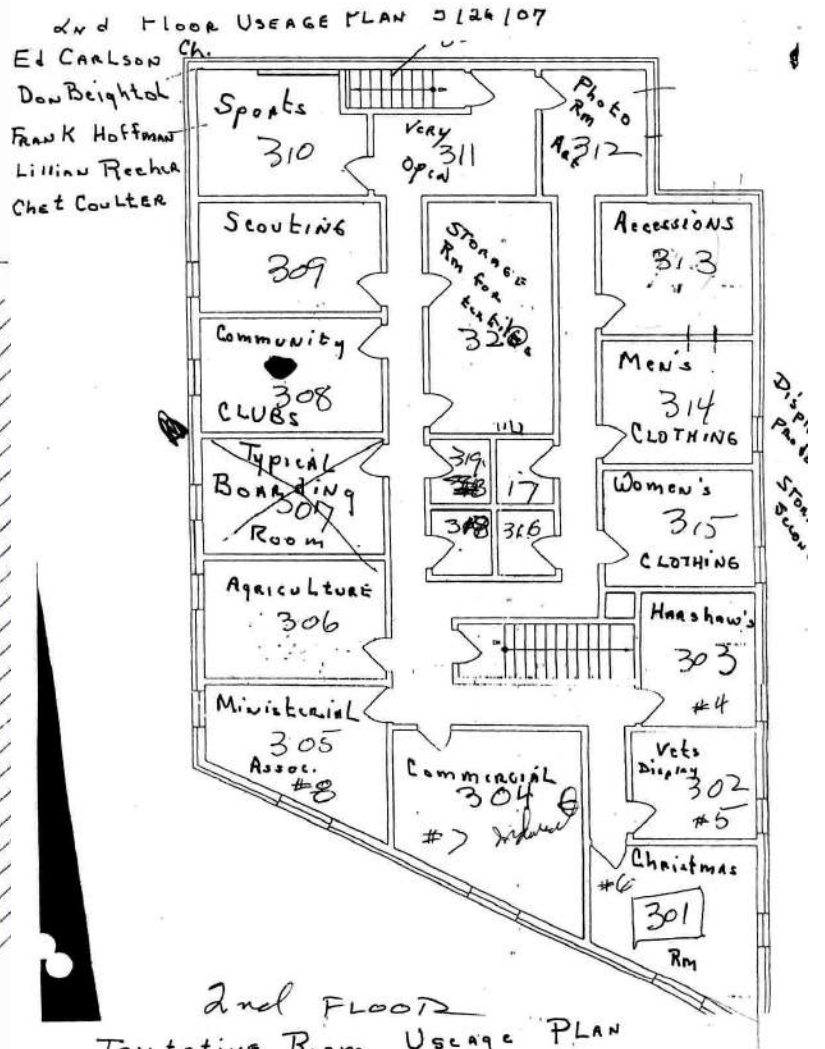
NE 9D-OOM-56 Ft, SE 81D-12M-44.9 Ft. SE 8D-24M-24.4 Ft. SE 8D-53M-1.10Ft. SW 13D 36M-55.76Ft. NW 51D-36M-47.9Ft.

The deeds were researched and compiled for us by Rhonda McClelland, Mercer County

FLOOR PLANS FOR 1ST & 2ND FLOORS



FIRST FLOOR PLAN
SCALE: 1/8" = 1'-0"



2nd FLOOR
Tentative Room Usage PLAN

COMMITTEES

As your new President I have appointed the following committee chairmen and co chairmen with the consent of the Executive Committee. I prefer that the committee consist of 2 co chairmen with 3 additional committee members for a total of 5. All committees will be asked to share their ideas with me in a written suggestion form due to my Senior Moments. I will in turn submit to the Executive Committee or the Board your reports or requests, whichever is most appropriate. The purpose of this is to let me know what is happening throughout the Society. If I haven't heard of it, I will presume it isn't happening. Only 1 driver can drive a team at a time and get the field plowed, or so I was told. New committees will be selected as needed or as suggested by the membership during 2008. If you are interested in serving on any given committee, please let me know of your desire. ~Ed

VOLUNTEER ASSISTANT TO THE TREASURER

Dr. Thomas Armour
Marty St. John

VOLUNTEER ASSISTANTS TO THE PRESIDENT

Jean G. Carlson
Mary 'Skip' Sample
Joe Monteleone

BUILDING

Gary Forsythe c
Dean Kildoo c
Dr. Thomas Armour
Ed Carlson
Dara Shirey
Skip Sample

HISTORICAL RECORDS

Marge Hummel c

ACCESSIONS

Frank Hoffman c
John Sample c
Sam Williamson
Dick Noel
Bill MacTaggart
Dr. Thomas Armour
Monica Ondrusko (computer)
Jeff Coleman (computer)

MEMBERSHIP

Marty St. John c (roll)
Becky May c (drive)

PUBLICATIONS

Lillian Reeher c
Jean G. Carlson
Chet Coulter
Ed Carlson
Dr. Thomas Armour

VOLUNTEERS

Anita DeMarco c

GENEALOGY/LIBRARY

Dara Shirey c
Jean Carlson
Ed Carlson

GRANTS

Skip Sample c
Dr. Thomas Armour c
Ed Carlson

PUBLICITY (NEWSPAPER, SPEAKERS BUREAU)

Skip Sample c
Anita DeMarco c

NEWSLETTER

Deborah St. John c
Jean Carlson
Ed Carlson
Marty St. John
Dr. Thomas Armour

WEBSITE

Deborah St. John c
Dr. Thomas Armour

EVENTS AND ACTIVITIES (ANNUAL BANQUET)

Skip Sample c

MUSEUM SHOPPE

Jane Neyman c
Jean Brown c

HISTORICAL MEMORIAL BOOK

Anita DeMarco c

LONG RANGE PLANNING

Skip Sample c
Ed Carlson c
Lillian Reeher

2008 VOLUNTEER BOOKLET

Harry Lutton c

COMMITTEES (continued from page 9)

CLOTHING ROOM

Mary Ann McClinton c

Gary Forsythe c

ROOM DISPLAYS

Dara Shirey c

Skip Sample c

Lillian Reeher

WINDOW DISPLAY

Georgie Hodge c

Skip Sample c

Paula Louise

A CALL FOR COMMUNITY SUPPORT

by Anita DeMarco

The Grove City Area Historical Society, organized in the spring of 1999, is a non-profit, all-volunteer organization developed for the purpose of preserving the heritage of our community. The former Traveler's Hotel on College Avenue has undergone drastic renovations in the past eight years. Our volunteers have dedicated their time and energy to help our society and those we serve. This volunteer spirit has enabled us to remove walls, install firewalls and fire panic doors, replace roofing, replace windows, install a handicapped bathroom and remodel the existing bathroom, install outside basement steps and a Billco door (an Eagle Scout project by Bill McCormick), establish a Genealogy Library, a Publication's Room, a Society Office and Accession Room, a Veteran's Hall of Honor and a Hallway of Faith.

We need the support of local businesses to continue this needed work. We are asking for your support to continue our progress and development. Please check our reduced yearly membership for businesses (\$50 annually).

Since our organization is the Grove City **AREA** Historical Society, we have members from Pine, Liberty, Wolf Creek and Springfield Townships, as well as, the Borough of Grove City. We need your continual financial support.

We currently have just over 200 members. Our membership categories provide an opportunity for everyone to become a member. For those who would like to make a significant contribution, we have the Lifetime Founding Membership of \$1,000 or the Life Membership of \$500. On a yearly basis, Business & Corporate Memberships are available for \$50; Family Memberships are \$40; Individual Memberships are \$20; and Senior (age 55) and Student Memberships are just \$10 per year.

Please consider a membership with the Historical Society and become involved in our development. You will be fascinated to learn more about the history of the Grove City Area. You also have the opportunity to have your family history placed in our Genealogy Library. We have had many interesting items donated and we are continually accepting items to add to this collection of memorabilia. We have numerous diverse jobs that can use the talents of all. Please sincerely consider being one of our many cherished volunteers.

We will be happy to answer your questions and give you a tour of our headquarters. Please feel free to contact us at 724-458-1798. Please leave your name and phone number if there is no answer.

THE MEMBERSHIP DRIVE

Our drive starts January 15, and ends April 19. We are asking each member to secure 5 new members to strengthen our Society in 2008. Please have your friends and neighbors fill out the membership applications provided in this Newsletter and send the form and correct amount of dues to our Membership Chairman Marty St John, % The Grove City Area Historical Society, PO Box 764, 111 College Avenue, Grove City, PA 16127.

NAME _____
 ADDRESS _____
 CITY, STATE, ZIP _____
 TELEPHONE _____
 EMAIL _____
 CIRCLE ONE: new member renewal change of address

MEMBERSHIP CATEGORIES: (check one)

- Founding: \$1000.00
- Life: \$500.00
- Corporate: \$50.00
- Family: \$40.00
- Individual: \$20.00
- Student/Senior: \$10.00

Founding and Life Memberships are payable over 3 years.

See back for additional information.

NAME _____
 ADDRESS _____
 CITY, STATE, ZIP _____
 TELEPHONE _____
 EMAIL _____
 CIRCLE ONE: new member renewal change of address

MEMBERSHIP CATEGORIES: (check one)

- Founding: \$1000.00
- Life: \$500.00
- Corporate: \$50.00
- Family: \$40.00
- Individual: \$20.00
- Student/Senior: \$10.00

Founding and Life Memberships are payable over 3 years.

See back for additional information.

NAME _____
 ADDRESS _____
 CITY, STATE, ZIP _____
 TELEPHONE _____
 EMAIL _____
 CIRCLE ONE: new member renewal change of address

MEMBERSHIP CATEGORIES: (check one)

- Founding: \$1000.00
- Life: \$500.00
- Corporate: \$50.00
- Family: \$40.00
- Individual: \$20.00
- Student/Senior: \$10.00

Founding and Life Memberships are payable over 3 years.

See back for additional information.

NAME _____
 ADDRESS _____
 CITY, STATE, ZIP _____
 TELEPHONE _____
 EMAIL _____
 CIRCLE ONE: new member renewal change of address

MEMBERSHIP CATEGORIES: (check one)

- Founding: \$1000.00
- Life: \$500.00
- Corporate: \$50.00
- Family: \$40.00
- Individual: \$20.00
- Student/Senior: \$10.00

Founding and Life Memberships are payable over 3 years.

See back for additional information.

NAME _____
 ADDRESS _____
 CITY, STATE, ZIP _____
 TELEPHONE _____
 EMAIL _____
 CIRCLE ONE: new member renewal change of address

MEMBERSHIP CATEGORIES: (check one)

- Founding: \$1000.00
- Life: \$500.00
- Corporate: \$50.00
- Family: \$40.00
- Individual: \$20.00
- Student/Senior: \$10.00

Founding and Life Memberships are payable over 3 years.

See back for additional information.

YOUR MEMBERSHIP ENSURES OUR SUCCESS

To join or renew, please complete this form and return to the Grove City Area Historical Society along with your payment.

Make checks payable to: **Grove City Area Historical Society**

GCAHS is a tax exempt, charitable 501c3 organization. All membership contributions are tax deductible to the extent of the law.

Name of Referring Member: _____

Cut on dotted line and return to GCAHS

YOUR MEMBERSHIP ENSURES OUR SUCCESS

To join or renew, please complete this form and return to the Grove City Area Historical Society along with your payment.

Make checks payable to: **Grove City Area Historical Society**

GCAHS is a tax exempt, charitable 501c3 organization. All membership contributions are tax deductible to the extent of the law.

Name of Referring Member: _____

Cut on dotted line and return to GCAHS

YOUR MEMBERSHIP ENSURES OUR SUCCESS

To join or renew, please complete this form and return to the Grove City Area Historical Society along with your payment.

Make checks payable to: **Grove City Area Historical Society**

GCAHS is a tax exempt, charitable 501c3 organization. All membership contributions are tax deductible to the extent of the law.

Name of Referring Member: _____

Cut on dotted line and return to GCAHS

YOUR MEMBERSHIP ENSURES OUR SUCCESS

To join or renew, please complete this form and return to the Grove City Area Historical Society along with your payment.

Make checks payable to: **Grove City Area Historical Society**

GCAHS is a tax exempt, charitable 501c3 organization. All membership contributions are tax deductible to the extent of the law.

Name of Referring Member: _____

Cut on dotted line and return to GCAHS

YOUR MEMBERSHIP ENSURES OUR SUCCESS

To join or renew, please complete this form and return to the Grove City Area Historical Society along with your payment.

Make checks payable to: **Grove City Area Historical Society**

GCAHS is a tax exempt, charitable 501c3 organization. All membership contributions are tax deductible to the extent of the law.

Name of Referring Member: _____

Cut on dotted line and return to GCAHS

VOLUNTEER OF THE MONTH - JANUARY



Gary Forsythe - Recommended by the Executive Committee

Gary became interested in the GCAHS when John Hummel, one of its founders, asked him to aid him in a job at the Society's Headquarters about four years ago. Gary has always had an interest in history and about that time he was working on his families' genealogy, making many stops in the Brookville/Siegel areas. Stopping at many local historical societies he began asking how the society was most used. The answer was 70% of the time was for genealogical research. Since that time Gary has been the Society's Handyman and a cochairman of their clothing display areas. One of the society's most heard quotes is, "Call Gary and see what he thinks or what he can do for us". Thanks, Gary, for your dedicated service to the Society.

CAPITAL IMPROVEMENT FUND PLEDGE

This is a once only soft approach asking our members and our community to pledge financial support toward the completion of PROJECT SECOND FLOOR RENOVATION.

We will need an additional \$50,000 funding to make available the 17 individual rooms usable for display and storage. This will include an audio/visual program for each rooms' display usable by the physically handicapped unable to climb the stairs and those visually handicapped who need to view objects close up. It will also help people desiring to use the facility for scanning researchable topics on display. This, along with our computer listing of all accessions, should provide the educational tools to allow for self education.

In September we hope to receive an additional \$20,000 State Grant by Senator Robbins to ready the second floor utilities and redo several rooms (hopefully the front 5 in order to make them usable this fall).

We will also need additional show cases, built in shelving and more storage units. Our long range planning committee for the second floor has proposed themes for each room.

Your generous help will be greatly appreciated. Please use the Pledge Card as a reminder of our goals and pledge what you are able to the Society by October 1st. We welcome your pledge at any time and we thank you for your help.

PROJECT SECOND FLOOR RENOVATION PLEDGE CARD

I WOULD LIKE TO PLEDGE _____ TO HELP RENOVATE THE SECOND FLOOR IN ORDER TO SHOW THE DIVERSE VARIETY OF GROVE CITY AREA HISTORY.

(Name)

Please place this where it is seen daily or until October 1st, 2008 or until you are able to mail your pledge to the Grove City Area Historical Society, P O Box 764, 111 College Avenue, Grove City, PA 16127

Grove City Area Historical Society

111 College Avenue
P.O. Box 764
Grove City, PA 16127
724-458-1798

NON-PROFIT
BULK RATE
U. S. POSTAGE
PAID
GROVE CITY, PA.
PERMIT NO. 764



Museum and Gift Shoppe Hours
Tuesday-Saturday 12:00pm - 3:00pm

Website:
www.grovecityhistoricalsociety.org
Email: gcahs@zoominternet.net

To join or renew your membership, please send your payment along with your name, address, phone number and email address to the Grove City Area Historical Society.
Make Checks Payable To: Grove City Area Historical Society
Founding and Life Memberships are payable over 3 years.

| | | |
|-------------------------------|------------|-------------------|
| MEMBERSHIP CATEGORIES: | | DONATIONS: |
| Founding | \$1,000.00 | \$ _____ |
| Life | \$500.00 | |
| Corporate | \$50.00 | |
| Family | \$40.00 | |
| Individual | \$20.00 | |
| Student / Senior | \$10.00 | |

GCAHS is a tax exempt charitable 501c3 organization. All membership contributions are tax deductible to the extent of the law. **THANK YOU FOR YOUR SUPPORT!**

PLEASE CIRCLE: new member renewal change of address

NAME _____

ADDRESS _____

CITY, STATE, ZIP _____

TELEPHONE _____

EMAIL _____

YOUR MEMBERSHIP ENSURES OUR SUCCESS