

2010

George Junior Republic began a capital campaign to finance a new school building.

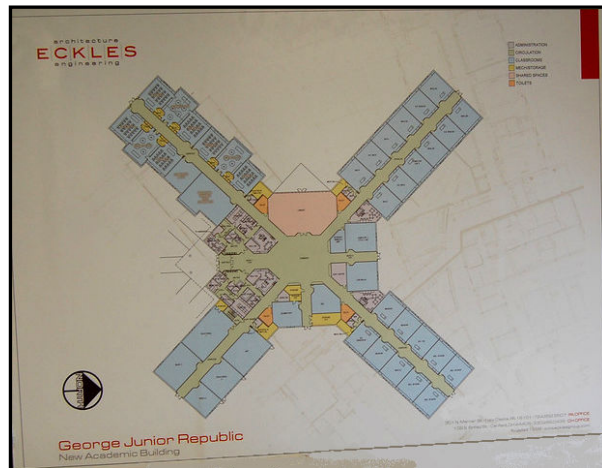
Note:

The \$11 million construction project for the new 62,000-square-foot, thirty-six classroom, and academic center began in July 2009. Two cottages were razed and relocated to provide land for the school.

The building was designed using a radial plan in which classroom hallways extend from a security center facilitating supervision.

The facility opened for classes on Jan. 4, 2011.

The new school building replaced Barnes School, which was built in 1947. Barnes was a charter member of the Board of the Pennsylvania George Junior Republic in 1909. (See 1947)



The Barnes School was (to be) utilized as an administration building and student center. Additions to the school were removed and the original structure remodeled for its new functions.



On March 6, 2012 Wendell August Forge burned.

Note:

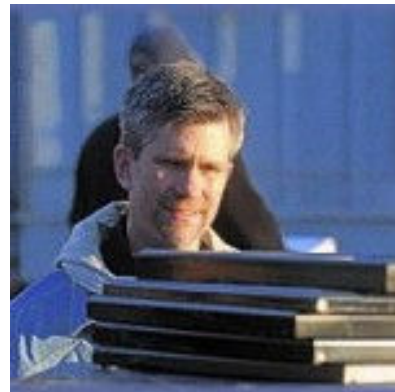
The fire started in a workshop and spread to the entire building.. About fifteen customers and twenty-five employees were in the building. No one was injured in the fire.

Approximately 20 fire companies from four departments were called to battle the massive fire. Firefighters were hampered by insufficient hydrants.

Within an hour the entire building was lost.



More than 2,000 unique hand cut that were stored in a vault were preserved.



On June 7, 2010, it was announced that Altegrity Inc, had reached an agreement to purchase Marsh and McLennan Cos corporate-intelligence unit Kroll for \$1.13 billion.

Note:

Altegrity is the holding company that owns USIS (See 1996)

General Electric announced major new diesel engine contracts.

Note:

On February 23, 2010, GE Marine announced that the Parker Towing Company, Inc. had reached an agreement with NREC Power Systems to purchase twin GE inline eight cylinder L250 (8L250) diesel engines for a new towboat. This application was to be the first commercial operation of the 8L250 engine platform on U.S. inland waterways.

The engines were to be produced in Grove City.

On September 4, General Electric Co. announced that it had established a business partnership in Mongolia with the private Mongolian investment firm Newcom Group to explore business opportunities in Mongolia. Among the area to be studied were railways.



Pictured is an Evolution Series locomotive like those delivered to Kazakhstan.

On September 24, GE Transportation announced an order for 115 AC44i locomotives from Brazilian rail operator MRS Logística S.A. This order was the largest locomotive purchase agreement in Brazil's history. The order included an option for 100 additional locomotives. The key components of the locomotives, including the 12-cylinder diesel engines, were to be manufactured at its Grove City, Pa., facility. The engine used up to 5% less fuel and reduced emissions by approximately 40%, and was known as the "green engine".

BP opened a new gasoline and convenience center.

Note:

The facility replaced the old BP station at the corner of Broad Street and Rt. 208 that had been razed.

The new facility included a gasoline station, included Little Caesar's Pizza, and a Gloria Jeans Coffee drive through sales store.

On August 30, the Prime Outlets Acquisition Company operators of the Prime Outlets of Grove City was sold.

Note:

Prime Outlets Acquisition Company was purchased by Simon Property Group, Inc. of Indianapolis operators of the Premium Outlets for approximately \$2.3 billion.

The name Prime Outlets Grove City was changed to the Grove City Premium Outlets.

Previously on December 8, 2009, the Simon Property Group, Inc. had announced that it entered into an agreement to acquire all of the outlet shopping center business of Prime Outlets Acquisition Company.

Premium Outlets was the world's largest owners of outlet centers, owning 85 properties, including 57 in the United States, eight in Japan, along with centers in Korea, Mexico, and Malaysia. 130 outlet stores Chairman and CEO David Simon said, "The Prime Outlets portfolio is an excellent strategic fit and presents a compelling opportunity for Simon to benefit from shoppers' increased demand for discounted brand-name merchandise.

On Monday April 26 the Pine Grove Square First National Bank branch First National Bank was robbed.

On December 2010 construction began on the community library addition on library began.

Note:

The renovation included a 2,657-square-foot addition to the front of the building, providing additional library space, a new family bathroom, a women's restroom and men's restroom within the facility.

In 2009, Grove City Council approved entering into an the engineering agreement with RPA Associates, to enlarge and remodel a new addition to the library, housed in the borough facility.



In 2009, Grove City Borough was awarded a \$489,985 state grant by the

Commonwealth of Libraries, Pennsylvania Department of Education to support the major expansion project at the Grove City Community Library. The total project cost was nearly \$610,000.

Tri-County made application to Pine and Liberty Townships for a conditional permit to operate a landfill at their existing waste station site.

Note:

In 2008, Tri-County submitted a bird abatement plan to the state Department of Environmental Protection and received approval from to proceed to make application for a landfill.

In April 2010, The Wolf Creek-Slippery Rock Creek Council of Governments voted to send a letter to the Department of Environmental Protection

disapproving the landfill. Five municipalities had made a stand against the reopening of Tri-County Industries' landfill in Liberty and Pine townships.

In May 2010, The Department of Environmental Protection suspended its review of Tri-County Landfill's permit applications until local zoning issues were addressed.

In December 2010, hearings were begun by both Pine and Liberty townships.

2011

Grove City College began a major new construction program.

Note:

The construction program included the construction of a new \$37.2-million science, engineering, and mathematics building.

Construction and outfitting of the building was expected to begin in February and take 24 to 30 months to complete.



Also included in the plan was the construction of a new 16,500-square-foot Christian Activities building behind Harbison Chapel. The facility would provide for social programs, spiritual fellowship and conferences as well as provide space for Christian programs, summer conferences, and church retreats



This facility would include the residence of the Dean of the Chapel, more than 23 student run ministries, a large fellowship hall, a board room, seminar and meeting spaces.

This Rendering was prepared by Archer & Buchanan Architecture



This photograph shows the beginning of the construction project.

Pine Township supervisors began planning for expansion of the township fire department.

Note:

For over a year, the township had been considering the construction of a new fire station. They had been reviewing plans presented by the Pine Township Engine Company.

This process led to talks with the Grove City Area Rescue Squad concerning the merging of the two departments and the use of the Rescue Squad facilities for the new fire station. Issues relating to the cost, location of the building, and water supply were being discussed.

RX Express Pharmacy announced that it would expand.

Note:

The RX Express Drug Store announced that it would expand its floor space into the vacant BiLo building.

Dairy Queen opened in a newly redesigned and remodeled facility.

Note:

The Dairy Queen soft ice cream business had been a local icon since its opening in 19XX.

Over the winter the structure was completely renovated updating the facilities and giving the building a contemporary look.



It was announced that a Save-A-Lot grocery store would be opening in Grove City.

Note:

The Knopp family announced that they would be opening a Save-A-Lot store at the vacant Bi-Lo supermarket location.

An extensive remodeling project reducing the size of the floor space to around 18,000 sq. ft. was planned to creating a smaller store. The store would offer basic grocery supplies. The store opened open in the early summer and employ about 20 people.

Two new sculptures were added to the ongoing downtown beautification project.



Note:
The sculptures were a part of the Olde Town Grove City Sculpture Signage project. This project was a cooperative project conceived by Olde Town Grove City's Design Committee and Glen Sanders, the Fine Arts Program Director at George Junior Republic. This project was formulated to involve George Junior Republic students in the community beautification project.



The sculptures were designed and created by students and funded by community and regional organizations, including Interstate Machine and Fabrication, the Canadian National Railroad Tower Presbyterian Church , and the Borough of Grove City

The Grove City Area Federal Credit Union expanded into a new facility.

Note:
The Grove City Area Federal Credit Union began construction of a new facility on PA Rt 208.





GE Transportation Celebrated 40 Years in Grove City

Note:

On Saturday, August 6 employees and family members celebrated General Electric's history in Grove City. Originally, the plant was opened for remanufacturing locomotive engines. Over time, the plant was expanded and dedicated to building new and remanufacturing diesel engines as well as marine and stationary power engines. The plant became one of the largest diesel locomotive engine manufacturing plants in the world producing some 2,000 engines a year.

Plant Manager, Bill Carney, said:

"Many employees have worked here for quite a few years and have seen this plant grow from a relatively small service operation to a world-class manufacturer of diesel engines used all over the world." "This is a day to celebrate the people who have made this operation successful for four decades.

The Grove City Christian Academy purchases the unused Washington Kindergarten Center.

Note:

As part of the Grove City Area School District's new middle school building project, the district's utilization of its facilities were reevaluated and classes were reassigned throughout the facilities. This reassignment made the Washington Kindergarten Center redundant.



At the time the Christian Academy was utilizing facilities in the First Baptist Church and the First Church of God and served some 110 students enrolled in preschool through eighth grade and two dozen enrolled in the high school study center.

Lee Wishing, GCCA Board President, said:

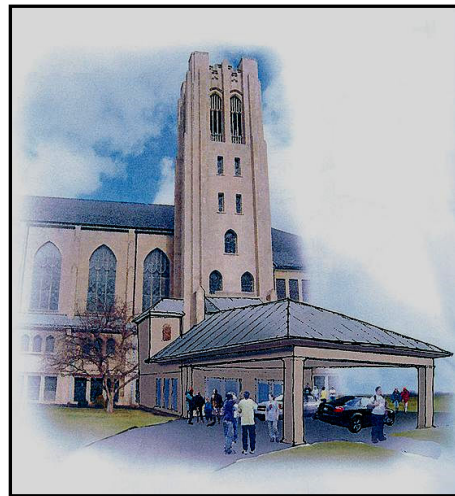
“This is a fantastic opportunity for the Academy to continue moving forward, offering a classical Christian education to the students of the Grove City region,” ...”We’re extremely thankful for God’s provisions, to the churches that have hosted us for the last four decades, and the donors who have made this purchase possible.”

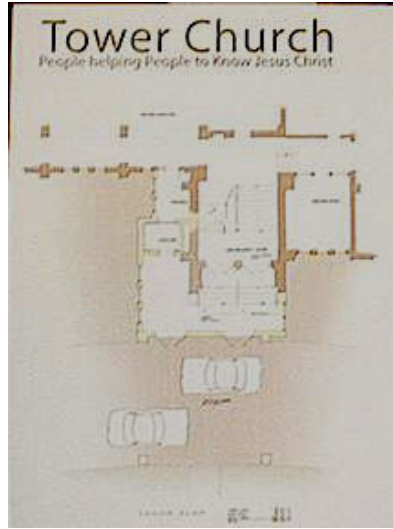
Tower Presbyterian Church announced plans to construct a new side entrance to the facility.

Note:

The trustees of the church engaged Ligo Architects in Slippery Rock to design a new entrance to the building to facilitate members who were having difficulty managing the stairs provided in the 1925 design.

The new design featured an entryway built out from the existing one at Tower and a portico at the entrance. The entrance included an elevator to access the sanctuary and the basement social hall and chapel. The final plan extended the elevator two additional floors above the sanctuary, where the pastor's office and Sunday school classrooms are located.





Construction began in October.